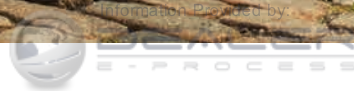


# TRVERSE 2015

CHEVROLET





Traverse LTZ AWD in Tungsten Metallic with available features.

## **THE 2015 TRAVERSE: FIND YOUR SPACE.**

*With a boldly styled exterior designed around a rich and refined interior, Chevrolet Traverse leads the way. Traverse offers seating for up to eight,<sup>1</sup> best-in-class maximum cargo space, ingenious safety technology and upscale details that make every ride feel like a vacation. No wonder Edmunds.com named Traverse a 2014 “Most Popular Large Crossover SUV” and the 2014 Traverse a “Top-Rated Vehicle” in its class.*

## **FIND *NEW* ROADS™**

<sup>1</sup> Standard on LS and 1LT. Available on 2LT. LTZ shown seats 7.



# NAMED "A BEST FAMILY CAR OF 2014."

— KELLEY BLUE BOOK'S KBB.COM<sup>1</sup>



<sup>1</sup> For more information, visit [www.kbb.com](http://www.kbb.com). Kelley Blue Book is a registered trademark of Kelley Blue Book Co., Inc.

Traverse LTZ in Tungsten Metallic.



**EXTERIOR DESIGN**



Traverse LTZ AWD in Tungsten Metallic with available features.





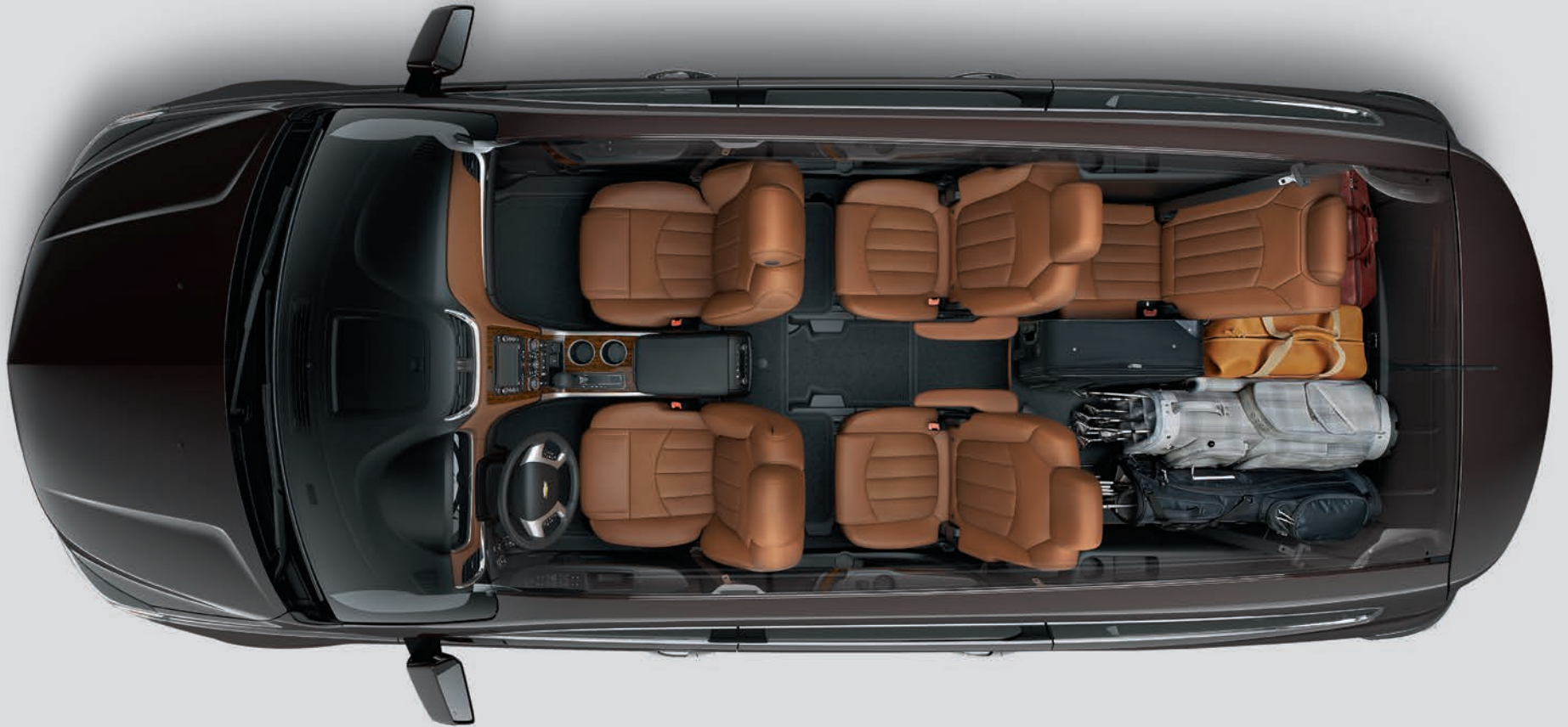
**REFINED IN EVERY DETAIL.** With a confidence that flows from every line and a presence that stands alone, Traverse makes a lasting impression.

**STYLE THAT STANDS OUT.**

- 1. Traverse LTZ features power-folding mirrors with turn signal indicators.*
- 2. The athletic hood design, bold grille and striking headlamps command attention.*
- 3. Inset clear-lens taillamp elements add to the expressive style.*

**INTERIOR DESIGN**

**WHEN IT COMES TO SPACE,  
TRAVERSE OVERACHIEVES.**



Traverse LTZ in Tungsten Metallic  
with Ebony/Saddle Up interior  
and available features.



Information Provided by:  
**DEALER**  
E-PROCESS



Traverse LTZ interior in Ebony/Saddle Up with available features.





Traverse LTZ AWD in Tungsten Metallic with available features.

**AVAILABLE POWER-REMOTE LIFTGATE.**

With a simple push of a button, the power-remote liftgate makes loading and unloading smooth and easy.

**BEST-IN-CLASS CARGO SPACE.** When it comes to space, Traverse overachieves. With 116.3 cubic feet of maximum cargo space<sup>1</sup> and 24.4 cubic feet behind the third row,<sup>1</sup> Traverse is best-in-class.

**AVAILABLE REAR PARK ASSIST.** As you travel in reverse at speeds less than 5 mph, Rear Park Assist uses sensors on the rear bumper to detect and alert you to stationary objects up to 8 feet behind your Traverse and to people walking past.

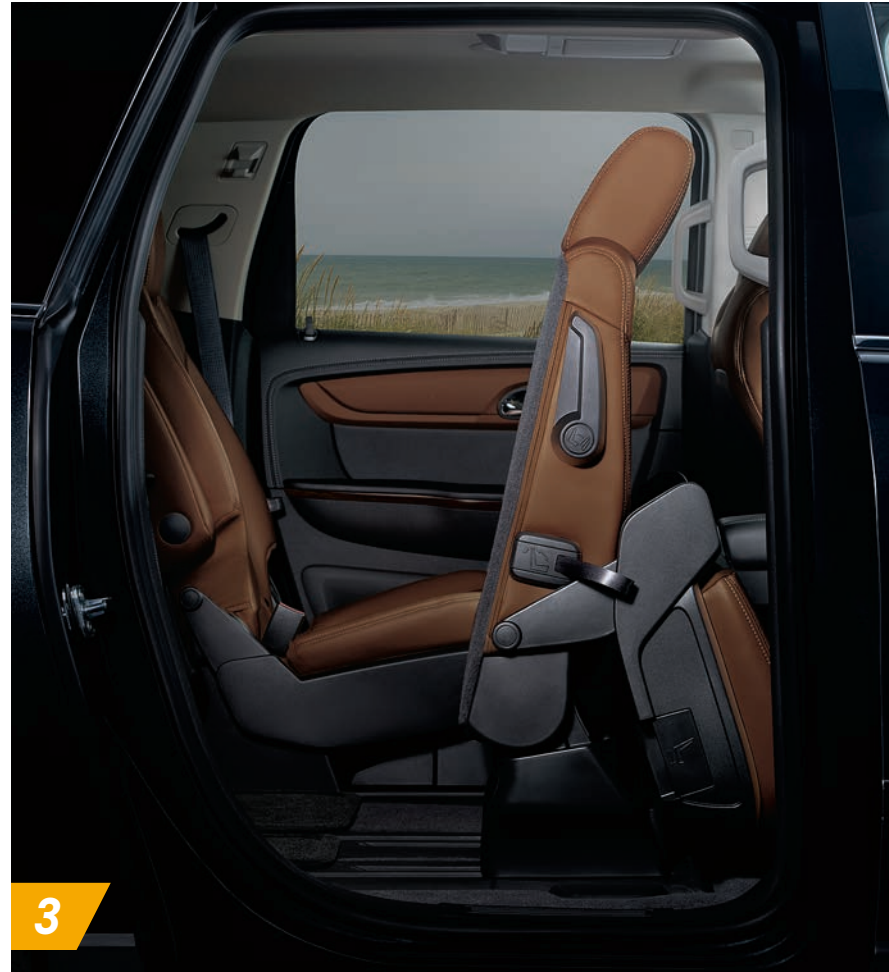
<sup>1</sup> Cargo and load capacity limited by weight and distribution.



Information Provided by:

**DEALER**  
E-PROCESS





**RICHLY APPOINTED AND THOROUGHLY PRACTICAL.**

- 1. LTZ amenities include heated/cooled driver and front passenger seats, tri-zone automatic climate control and dual front cup holders.*
- 2. Supple soft touch surfaces and tailored appointments surround you.*
- 3. Ingenious Smart Slide® second-row seating allows easy access to the third row.*



**CONFIDENT, CONNECTED, COVERED. THAT'S TRAVERSE TECHNOLOGY.**

1. The rear vision camera uses the 6.5-inch diagonal color touch-screen display to show the area behind your Traverse when backing up.
2. Download the OnStar RemoteLink<sup>®1</sup> and myChevrolet<sup>2</sup> mobile apps to remotely connect to your Traverse.
3. Three USB ports<sup>3</sup> provide the capability to power or connect with compatible devices like a smartphone or MP3 player.

<sup>1</sup> Available on select Apple, Android, BlackBerry and Windows devices. Services vary by device, vehicle and conditions. Requires active OnStar subscription, which is standard for six months. <sup>2</sup> Requires iPhone or Android platform. <sup>3</sup> Not compatible with all devices.

**STAY CONNECTED.** With available Chevrolet MyLink<sup>1</sup>, you can handle calls, play music and access contacts from your compatible smartphone simply by touching the 6.5-inch diagonal color touch-screen or through voice commands. Bluetooth<sup>®</sup> wireless technology<sup>2</sup> and steering wheel controls let you make, answer and end phone calls without ever taking your hands off the wheel. You can also stream music from online sources like Pandora<sup>®</sup> Internet Radio<sup>3</sup> and Stitcher SmartRadio.<sup>TM3</sup>

**SIRI EYES FREE.<sup>4</sup>** Keep your hands on the wheel and your eyes on the road while you access your compatible iPhone.<sup>®</sup> Just connect your iPhone to your Chevrolet MyLink Radio using Bluetooth wireless technology.<sup>2</sup>

**TRAVEL CONFIDENTLY.** Get directions with OnStar<sup>®</sup> Turn-by-Turn Navigation (standard for the first six months)<sup>5</sup> Or go for the available Chevrolet MyLink<sup>1</sup> with Navigation, which offers full GPS navigation features plus 2-D/3-D maps, points of interest, and SiriusXM NavTraffic<sup>6</sup> and Local Forecast Weather with a 3-month trial subscription.

<sup>1</sup> Full functionality requires compatible Bluetooth and smartphone, and USB connectivity for some devices. MyLink on Traverse does not include Gracenote functionality. Map coverage available in the United States, Puerto Rico and Canada. <sup>2</sup> Go to [gmtotalconnect.com](http://gmtotalconnect.com) to find out which phones are compatible with the vehicle. <sup>3</sup> Data plan rates apply. <sup>4</sup> Requires available Chevrolet MyLink and compatible iPhone running iOS 6 or later. <sup>5</sup> Visit [onstar.com](http://onstar.com) for coverage map. Services vary by model. <sup>6</sup> For more information about NavTraffic, visit [siriusxm.com/navtraffic](http://siriusxm.com/navtraffic). XM satellite service is available only in the 48 contiguous United States and D.C.



Traverse LTZ interior in Ebony/Saddle Up with available features.

SAFETY

# INGENIOUS TECHNOLOGY IS ALL AROUND YOU.

Travel with confidence in the 2015 Traverse LTZ. Ingenious patented safety technology provides peace of mind as it makes every drive more enjoyable.

**LANE DEPARTURE WARNING.** This available camera-based system sends an alert if you unintentionally drift out of your lane (without a turn signal). The camera, mounted near the inside rearview mirror, reads traffic lane markings when identifiable and provides audible and visual alerts.

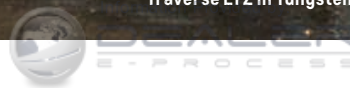
**SIDE BLIND ZONE ALERT.** This available feature uses radar sensors on both sides of the vehicle to help “look” for other vehicles in your side mirror blind zones and indicates their presence with LED-lit symbols in the exterior mirrors.

**FORWARD COLLISION ALERT.** This available safety feature identifies vehicles ahead and alerts the driver to any potential front-end crash risks, helping provide time to stop and/or change course.

**REAR CROSS TRAFFIC ALERT.** Using the same radar sensors as the Side Blind Zone Alert system, this available feature alerts you to crossing traffic behind your Traverse when backing up. Audible alerts, as well as visual alerts on the rear vision camera screen, are triggered if approaching vehicles are detected.

**SAFETY STARTS WITH YOU.** Safety features are no substitute for the driver’s responsibility to operate the vehicle in a safe manner. The driver should remain attentive to traffic, surroundings and road conditions at all times. Read the vehicle Owner’s Manual for more important safety information.

Traverse LTZ in Tungsten Metallic.



Traverse LTZ in Silver Ice Metallic  
with available features.



# OVERALL VEHICLE SCORE FOR SAFETY.<sup>1</sup>

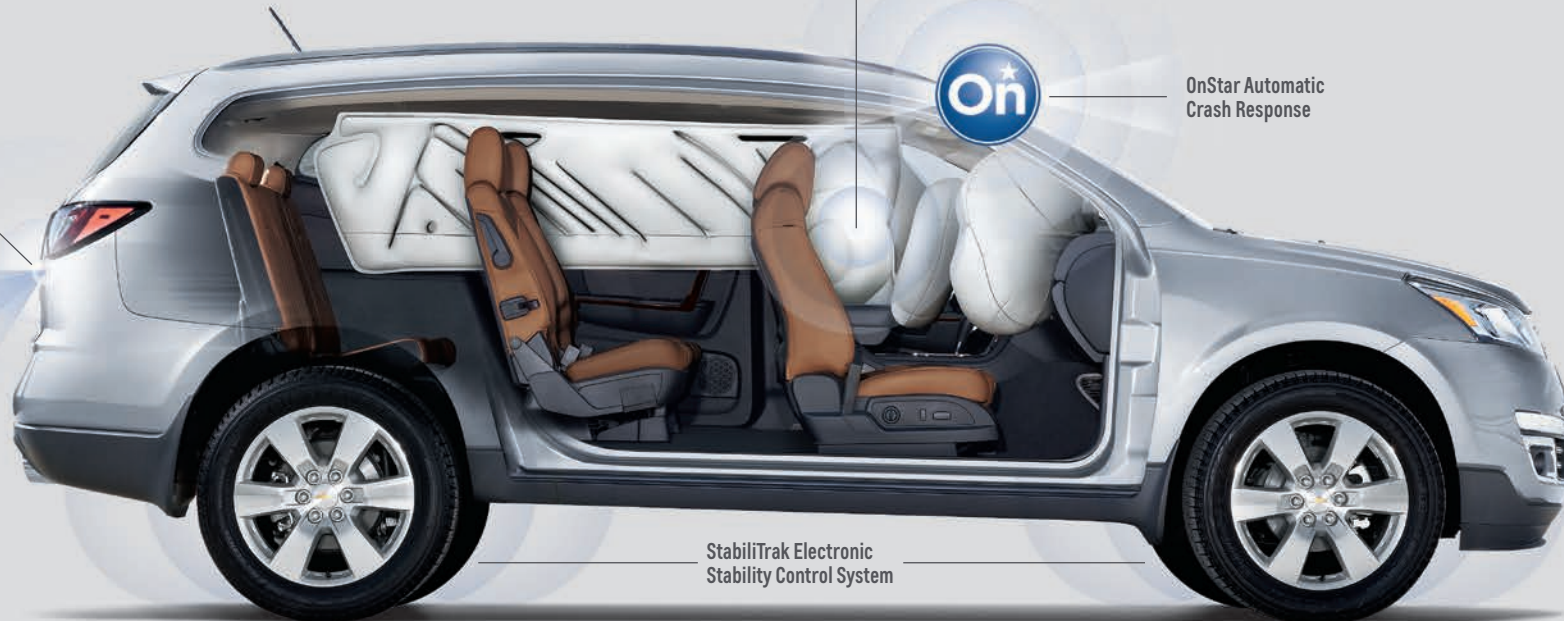
— NATIONAL HIGHWAY TRAFFIC SAFETY ADMINISTRATION

Rear Vision Camera

Front Center  
Side-Impact Air Bag



OnStar Automatic  
Crash Response



StabiliTrak Electronic  
Stability Control System

<sup>1</sup> Government 5-Star Safety Ratings are part of the National Highway Traffic Safety Administration's (NHTSA's) New Car Assessment Program ([www.SaferCar.gov](http://www.SaferCar.gov)). <sup>2</sup> Air bag inflation can cause severe injury or death to anyone too close to the air bag when it deploys. Be sure every occupant is properly restrained. Always use safety belts and the correct restraint for your child's age and size. Even in vehicles equipped with the Passenger Sensing System, children are safer when properly secured in a rear seat in the appropriate infant, child or booster seat. Never place a rear-facing infant restraint in the front seat of any vehicle equipped with a passenger air bag. See the Owner's Manual and the child safety seat instructions for more safety information. <sup>3</sup> Visit [onstar.com](http://onstar.com) for coverage map, details and system limitations. OnStar acts as a link to existing emergency service providers. Not all vehicles may transmit all crash data.

**REAR VISION CAMERA.** When traveling in reverse at low speeds, the rear vision camera provides a real-time picture of the area immediately behind your Traverse on the 6.5-inch diagonal color touch-screen display.

**FRONT CENTER SIDE-IMPACT AIR BAG.** The available industry-first Front Center Air Bag<sup>2</sup> deploys from the right side of the driver seat and positions itself between the front seats for added cushioning and restraint to help protect the driver and passenger from colliding with one another in the event of a side-impact collision.

**ONSTAR AUTOMATIC CRASH RESPONSE<sup>3</sup>** In a crash, built-in sensors can automatically alert a specially trained OnStar Advisor who is immediately connected into your Traverse to see if you need help sent to your exact location – even if you can't ask for it. You're backed by a powerful network that will get you all the assistance you need.

**STABILITRAK<sup>®</sup> ELECTRONIC STABILITY CONTROL SYSTEM.** This innovative safety technology is designed to improve vehicle stability on most road surfaces, especially during emergency maneuvers and difficult driving conditions.



**PERFORMANCE**



Traverse LTZ AWD in Siren Red Tintcoat (extra-cost color) with available features.



Information and more  
**TRAVEL**  
E-PROCESS

## **ENJOY THE POWER OF EFFICIENCY.**

**REVVED UP.** With more horsepower, torque and towing capability than Honda Pilot or Toyota Highlander, Traverse lets you make the most out of every mile – and enjoy every minute of it. The catalyst is a spirited yet efficient direct injected 3.6L V6 engine that offers a winning combination of 24 MPG highway<sup>1</sup> and 281 horsepower.

**REFINED RIDE.** This acclaimed performance is paired with a tuned 4-wheel independent suspension for confident response and an ultra-smooth ride. Available all-wheel drive helps maintain sure traction in all types of weather and road conditions.



<sup>1</sup> Based on EPA estimates for FWD.

PEACE OF MIND



Traverse LTZ AWD in Tungsten Metallic with available features.



## COMPLETE CARE

**WE'RE WITH YOU ALL THE WAY.** Chevrolet Complete Care reflects our commitment to you and your new Traverse. We've got you covered with 2 years of included Scheduled Maintenance and 5 years of Roadside Assistance and Courtesy Transportation.

**ONSTAR BASIC PLAN.** Stay connected to everyone and everything that matters with the OnStar Basic Plan<sup>1</sup> included with your Traverse. You'll get OnStar RemoteLink<sup>®</sup> Key Fob Services<sup>2</sup> so you can remotely start your car,<sup>3</sup> lock and unlock your doors, and activate your horn and lights from anywhere – using your smartphone or other mobile device. Plus, when you opt in for OnStar Vehicle Diagnostics,<sup>4</sup> we'll run monthly checks of your vehicle's engine, transmission, antilock brakes and more. And if you sign up for Dealer Maintenance Notification, we can send your diagnostic report directly to your preferred dealer to make scheduling service simple. For Emergency Services, Stolen Vehicle Assistance and other Advisor-based services, see additional OnStar plans.

### **YOUR COMPREHENSIVE OWNER BENEFIT PROGRAM.**

*2 years/24,000 miles of included Scheduled Maintenance.<sup>5</sup>*

*5 years/100,000 miles of Roadside Assistance<sup>6</sup> and Courtesy Transportation.<sup>6</sup>*

*5-year/100,000-mile Powertrain Limited Warranty.<sup>6</sup>*

*3-year/36,000-mile Bumper-to-Bumper Warranty.<sup>6</sup>*

*6 years/100,000 miles of Rust-Through Protection.<sup>6</sup>*

*5 years of OnStar Basic Plan including RemoteLink Key Fob Services.<sup>2</sup>*

*6 months of OnStar Directions & Connections<sup>®</sup> Plan.<sup>7</sup>*

<sup>1</sup> Access is available for five years from the date of vehicle delivery and is transferable. Does not include any emergency services or other OnStar services. See [onstar.com](http://onstar.com) for details and system limitations. <sup>2</sup> Access is available for 5 years from the date of vehicle delivery and is transferable. Does not include any emergency services or other OnStar services. To cancel RemoteLink Key Fob Services or if your vehicle is sold, it is important to contact an OnStar Advisor. See [onstar.com/mobile](http://onstar.com/mobile) for full details. <sup>3</sup> Requires available factory-installed remote vehicle starter system. <sup>4</sup> Capabilities vary by model. Visit [onstar.com](http://onstar.com) for details and system limitations. <sup>5</sup> Covers only scheduled oil changes with filter and tire rotations according to your new vehicle's recommended maintenance schedule for up to 2 years or 24,000 miles, whichever comes first. Does not include air filters. Maximum of four service events. See participating dealer for other restrictions and complete details. <sup>6</sup> Whichever comes first. See dealer for details. <sup>7</sup> Visit [onstar.com](http://onstar.com) for coverage map, details and system limitations. Services vary by model and conditions.





## COLORS



BLACK GRANITE METALLIC<sup>1,2</sup>



BLUE VELVET METALLIC



SIREN RED TINTCOAT<sup>1,2</sup>



SABLE METALLIC<sup>1,2</sup>



TUNGSTEN METALLIC



CHAMPAGNE SILVER METALLIC<sup>2</sup>



SILVER ICE METALLIC



WHITE DIAMOND TRICOAT<sup>1,2</sup>



WHITE

## WHEELS



17" Steel with Painted Wheel Cover  
(Standard on LS)



18" Machined-Aluminum  
(Standard on 1LT and 2LT)



20" Aluminum  
(Standard on LTZ)



20" Machined-Aluminum with Painted  
Spokes (Available on 1LT; requires Style  
and Technology Package)

## DEALER-INSTALLED ACCESSORIES

PERSONALIZE YOUR TRAVERSE AT [CHEVROLET.COM/ACCESSORIES](http://CHEVROLET.COM/ACCESSORIES)



6" Chrome Oval Assist Steps



All-Weather Floor Mats



Dual DVD Rear-Seat Entertainment System



Front Door Illuminated Sill Plates



Roof Rack Side and Cross Rail Package

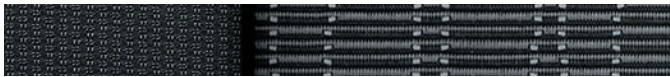
<sup>1</sup> Extra-cost color. <sup>2</sup> Not available on LS.



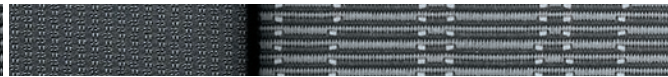
Information Provided by:

DEALER  
E-PROCESS

# FABRICS



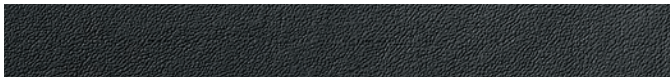
Ebony Premium Cloth<sup>1</sup>



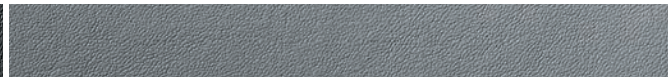
Dark Titanium-Color/Light Titanium-Color Premium Cloth<sup>1,2</sup>



Ebony/Saddle Up Premium Cloth<sup>1</sup>



Ebony Leather Appointments<sup>3</sup>



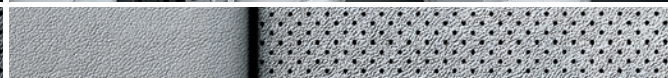
Dark Titanium-Color/Light Titanium-Color Leather Appointments<sup>3</sup>



Ebony/Saddle Up Leather Appointments<sup>3,4</sup>



Ebony Perforated Leather Appointments<sup>4,5</sup>



Dark Titanium-Color/Light Titanium-Color Perforated Leather Appointments<sup>4,5</sup>



Ebony/Saddle Up Perforated Leather Appointments<sup>4,5</sup>

<sup>1</sup> Standard on 1LT and 2LT. <sup>2</sup> Standard on LS. <sup>3</sup> Available on 2LT. <sup>4</sup> Not available with 8-passenger seating. <sup>5</sup> Standard on LTZ.

## SELECT VEHICLE FEATURES

### TRAVERSE LS

3.6L DOHC V6 engine with Direct Injection

6-speed automatic transmission with TAPshift® manual shift control

OnStar Directions & Connections® Plan<sup>1</sup> with Turn-by-Turn Navigation for the first six months

Tire Pressure Monitoring System (excludes spare tire)

Power-programmable door locks with lockout protection and rear child safety locks

Halogen headlamps with automatic exterior lamp control

Front and rear intermittent wipers with washers

Outside power-adjustable manual-folding black mirrors

Chrome door handles

Black roof rail moldings

Rear spoiler

AM/FM radio with 6.5-inch diagonal color touch-screen display, CD player and auxiliary input jack

SiriusXM Satellite Radio<sup>2</sup> All Access Package with 3-month trial subscription

Bluetooth® wireless technology<sup>3</sup> for select phones with steering wheel-mounted controls

USB port<sup>4</sup> in lower instrument panel storage area and two charge-only USB ports<sup>4</sup> in rear of center console

Enhanced Driver Information Center

Rear vision camera system with display integrated into 6.5-inch diagonal color touch-screen

Remote Keyless Entry

Comfort grip urethane steering wheel with mounted cruise and audio controls

Premium Cloth seating

### TRAVERSE 1LT In addition to or replacing LS features, 1LT includes:

Outside heated power-adjustable manual-folding body-color mirrors with turn signal indicators

Rear Park Assist

Foglamps

18" machined-aluminum wheels

8-way power-adjustable driver seat with power lumbar control and front center air bag<sup>5,6</sup>

Leather-wrapped steering wheel with mounted audio and cruise controls

Remote vehicle starter system

### TRAVERSE 2LT In addition to or replacing 1LT features, 2LT includes:

Outside heated power-adjustable manual-folding body-color mirrors with turn signal indicators and driver-side auto-dimming feature

Power-remote liftgate

Chevrolet MyLink<sup>7</sup> Radio with Bluetooth audio streaming,<sup>3</sup> Siri Eyes Free<sup>8</sup> and Text Message Alerts<sup>9</sup>

10-speaker Bose® sound system

Heated driver and front passenger seats

Tri-zone automatic climate controls

Inside rearview auto-dimming mirror

### TRAVERSE LTZ In addition to or replacing 2LT features, LTZ includes:

Variable-effort power steering

Dual-outlet exhaust with bright tips

Forward Collision Alert and Lane Departure Warning

Rear Cross Traffic Alert

Side Blind Zone Alert

Outside heated power-adjustable power-folding mirrors with turn signal indicators and driver-side auto-dimming and memory features

20" aluminum wheels

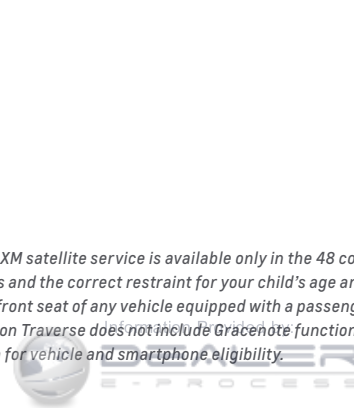
Chevrolet MyLink<sup>7</sup> Radio with Navigation

First- and second-row seats with perforated leather appointments

Heated and cooled driver and front passenger seats

Heated steering wheel

<sup>1</sup> Visit [onstar.com](http://onstar.com) for coverage map, details and system limitations. Services vary by model and conditions. <sup>2</sup> XM satellite service is available only in the 48 contiguous United States and D.C. <sup>3</sup> Go to [gmtotalconnect.com](http://gmtotalconnect.com) to find out which phones are compatible with the vehicle. <sup>4</sup> Not compatible with all devices. <sup>5</sup> Requires 8-way power driver seat. <sup>6</sup> Always use safety belts and the correct restraint for your child's age and size. Even in vehicles equipped with the Passenger Sensing System, children are safer when properly secured in a rear seat in the appropriate infant, child or booster seat. Never place a rear-facing infant restraint in the front seat of any vehicle equipped with a passenger air bag. See the Owner's Manual and the child safety seat instructions for more safety information. <sup>7</sup> Full functionality requires compatible Bluetooth and smartphone, and USB connectivity for some devices. MyLink on Traverse does not include Gracenote functionality. <sup>8</sup> Requires available Chevrolet MyLink and compatible iPhone running iOS 6 or later. <sup>9</sup> Requires a compatible smartphone with Bluetooth profile (M.A.P.) and applicable text messaging features. Visit [gmtotalconnect.com](http://gmtotalconnect.com) for vehicle and smartphone eligibility.



# SPECIFICATIONS

	LS	1LT	2LT	LTZ
<b>EXTERIOR</b>				
Liftgate, rear: Manual	●	●	–	–
Power-remote	–	–	●	●
Mirrors: Manual-folding, power-adjustable, black	●	–	–	–
Manual-folding, power-adjustable, heated, body-color with turn signal indicators	–	●	–	–
Manual-folding, power-adjustable, heated, body-color with turn signal indicators and driver-side auto-dimming feature	–	–	●	–
Power-folding, power-adjustable, heated, body-color with turn signal indicators, driver-side auto-dimming feature and Side Blind Zone Alert indicator	–	–	–	●
Rear Park Assist: Audible warning	–	●	●	●
Sunroof: SkyScape, power tilt-sliding front; fixed rear skylight with sunscreen	–	○	○	○
<b>ENGINE/CHASSIS</b>				
Engine: 3.6L DOHC V6 with Direct Injection, 281 horsepower and 266 lb.-ft. of torque (288 horsepower and 270 lb.-ft. of torque on LTZ)	●	●	●	●
Exhaust: Single-outlet	●	●	●	–
Dual-outlet with bright tips	–	–	–	●
Oil-Life Monitor	●	●	●	●
Trailer equipment: Heavy-duty cooling system and trailer hitch	○	○	○	○
<b>SAFETY &amp; SECURITY</b>				
Air bags: <sup>1</sup> Driver and front passenger, frontal and pelvic/thorax side-impact; head-curtain side-impact for all rows in outboard seating positions	●	●	●	●
Inboard seat-mounted side-impact center for driver and front passenger	○ <sup>2</sup>	●	●	●
All-wheel drive	○	○	○	○
Brakes: 4-wheel antilock disc	●	●	●	●
Forward Collision Alert and Lane Departure Warning	–	–	–	●
Side Blind Zone Alert and Rear Cross Traffic Alert	–	–	–	●
StabiliTrak Electronic Stability Control System with Proactive Roll Avoidance and Traction Control, includes Electronic Trailer Sway Control and Hill Start Assist	●	●	●	●

● STANDARD ○ AVAILABLE – NOT AVAILABLE

	LS	1LT	2LT	LTZ
<b>INTERIOR</b>				
Acoustic Insulation Package	●	●	●	●
Climate control: Rear, manual	●	●	–	–
Single-zone, front, manual	●	●	–	–
Tri-zone automatic	–	–	●	●
Console: First-row with two cup holders, covered storage bin and sliding armrest with storage and dual charge-only USB ports <sup>3</sup> on rear	●	●	●	●
Enhanced Driver Information Center: Personalization features, speedometer, tachometer, outside temperature display, odometer, trip odometer and trip computer with digital compass, and indicators for low oil, fuel and coolant	●	●	●	●
Mirror: Rearview, manual day/night	●	●	–	–
Rearview, auto-dimming	–	–	●	●
Remote vehicle starter system	–	●	●	●
Steering wheel: Urethane comfort grip with mounted cruise and audio controls	●	–	–	–
Leather-wrapped with mounted cruise and audio controls	–	●	●	●
Heated	–	–	–	●
Storage: Rear underfloor	●	●	●	●
Universal Home Remote: 3-channel programmable, includes garage door opener	–	○ <sup>4</sup>	●	●
Windows: Power, with driver express-down	●	●	●	–
Power, with driver express-up/down and passenger express-down	–	–	–	●
<b>SEATING</b>				
8-passenger: Second- and third-row flat-folding 60/40 split-bench seats	●	●	○ <sup>5</sup>	–
7-passenger: Second-row flat-folding captain's chairs and third-row flat-folding 60/40 split-bench seat	–	○	●	●
Heated seats: Driver and front passenger	–	○ <sup>6</sup>	●	–
Heated and cooled seats: Driver and front passenger	–	–	–	●
Premium Cloth	● <sup>7</sup>	●	●	–
Leather-appointed first and second rows (perforated inserts on LTZ)	–	–	○	●
Manual-adjustable driver seat: 4-way with manual lumbar control	●	–	–	–
Manual-adjustable front passenger seat: 2-way with manual recline	●	●	●	–

	LS	1LT	2LT	LTZ
<b>SEATING (CONTINUED)</b>				
Power-adjustable driver seat: 8-way with power lumbar control and power recline (memory for seat and outside mirrors on LTZ)	○	●	●	●
Power-adjustable front passenger seat: 8-way with power recline and lumbar control	–	–	○ <sup>8</sup>	●
<b>AUDIO SYSTEMS</b>				
AM/FM radio with SiriusXM Satellite Radio <sup>9</sup> All Access Package with 3-month trial subscription, 6.5-inch diagonal color touch-screen and CD player	●	●	–	–
Chevrolet MyLink <sup>10</sup> Radio: 6.5-inch diagonal color touch-screen display, AM/FM radio, CD player, SiriusXM Satellite Radio <sup>9</sup> All Access Package with 3-month trial subscription, Bluetooth audio streaming <sup>11</sup> for music, hands-free smartphone integration, voice-activated technology for music and phone, Siri Eyes Free <sup>12</sup> and Text Message Alerts <sup>13</sup>	–	○ <sup>4</sup>	●	–
Chevrolet MyLink <sup>10</sup> Radio with Navigation: Includes features listed above plus GPS navigation system and SiriusXM NavTraffic <sup>14</sup> and Local Forecast Weather with 3-month trial subscription	–	–	○ <sup>15</sup>	●
10-speaker Bose <sup>®</sup> sound system	–	–	● <sup>16</sup>	● <sup>16</sup>
Rear-Seat Entertainment System: Rear-seat DVD player with remote control, overhead display, two 2-channel wireless infrared headphones, auxiliary audio/video input jacks and 120-volt, three-prong, household-style power outlet; includes 10-speaker Bose 5.1 surround sound system	–	–	○	○
<b>WHEELS</b>				
17" steel with painted wheel cover	●	–	–	–
18" machined-aluminum	–	●	●	–
20" machined-aluminum with painted spokes	–	○ <sup>4</sup>	–	–
20" aluminum	–	–	–	●
Compact spare tire	●	●	●	●
<b>PACKAGES</b>				
Style and Technology Package: Heated front seats, Universal Home Remote, Chevrolet MyLink <sup>10</sup> Radio, 20" aluminum wheels and variable-effort power steering	–	○	–	–
Traveler Package: Rear-Seat Entertainment System includes all features listed above, tri-zone automatic climate control and additional 9 months of SiriusXM Satellite Radio <sup>9</sup> All Access Package	–	○	–	–

<sup>1</sup> Always use safety belts and the correct restraint for your child's age and size. Even in vehicles equipped with the Passenger Sensing System, children are safer when properly secured in a rear seat in the appropriate infant, child or booster seat. Never place a rear-facing infant restraint in the front seat of any vehicle equipped with a passenger air bag. See the Owner's Manual and the child safety seat instructions for more safety information. <sup>2</sup> Requires 8-way power driver seat. <sup>3</sup> Not compatible with all devices. <sup>4</sup> Included and available only with Style and Technology Package. <sup>5</sup> Not available with Ebony/Saddle Up interior color leather appointments. <sup>6</sup> Available with Premium Cloth. Included when Style and Technology Package is ordered. <sup>7</sup> Requires Dark Titanium-Color/Light Titanium-Color Premium Cloth. <sup>8</sup> Requires available leather-appointed seats. <sup>9</sup> XM satellite service is available only in the 48 contiguous United States and D.C. <sup>10</sup> Full functionality requires compatible Bluetooth and smartphone, and USB connectivity for some devices. MyLink on Traverse does not include Gracenote functionality. <sup>11</sup> Go to [gmtotalconnect.com](http://gmtotalconnect.com) to find out which phones are compatible with the vehicle. <sup>12</sup> Requires available Chevrolet MyLink and compatible iPhone running iOS 6 or later. <sup>13</sup> Requires a compatible smartphone with Bluetooth profile (M.A.P.) and applicable text messaging features. Visit [gmtotalconnect.com](http://gmtotalconnect.com) for vehicle and smartphone eligibility. <sup>14</sup> For more information about NavTraffic, visit [siriusxm.com/navtraffic](http://siriusxm.com/navtraffic). XM satellite service is available only in the 48 contiguous United States and D.C. <sup>15</sup> Not available with Rear-Seat Entertainment System. <sup>16</sup> Upgraded to 5.1 Surround Sound with available Rear-Seat Entertainment System.



## DIMENSIONS



## MAXIMUM CAPACITIES

### EPA-ESTIMATED FUEL ECONOMY

FWD	17 MPG city/24 highway/19 combined
AWD	16 MPG city/23 highway/19 combined

**FUEL TANK** (APPROXIMATE) 22 gallons

**TRAILER WEIGHT RATING**<sup>1</sup> 5,200 lbs.

**SEATING** Seats 7/8

**CARGO VOLUME**<sup>2</sup> (CUBIC FEET)  
 Behind third-row seat: 24.4  
 Behind second-row seat: 70.3  
 Behind first-row seats: 116.3

## OWNERSHIP EXTRAS



CHEVROLET.COM/WARRANTY



CHEVROLET.COM/ACCESSORIES



ONSTAR.COM



SIRIUSXM.COM

## WARRANTY

**100,000-MILE/5-YEAR TRANSFERABLE POWERTRAIN LIMITED WARRANTY** Every 2015 Chevrolet passenger car, light-duty truck, SUV and crossover comes with a 100,000-mile/5-year (whichever comes first) transferable Powertrain Limited Warranty. Plus, you get 100,000 miles/5 years (whichever comes first) of the 24/7 Roadside Assistance Program, the Courtesy Transportation Program, and much more. See dealer for details.

**NEW VEHICLE LIMITED WARRANTY** GM vehicles registered in the USA are covered for 36,000 miles/3 years (whichever comes first). The complete vehicle is covered, including tires, towing to your nearest Chevrolet dealership and cosmetic corrosion resulting from defects. Repairs will be made to correct any vehicle defect, and most warranty repairs will be made at no charge. In addition, rust-through corrosion will be covered for 100,000 miles/6 years (whichever comes first). See dealer for details.

<sup>1</sup> Maximum trailer weight ratings are calculated assuming a base vehicle, except for any option(s) necessary to achieve the rating, plus driver. The weight of other optional equipment, passengers and cargo will reduce the maximum trailer weight your vehicle can tow. See your Chevrolet dealer for additional details. <sup>2</sup> Cargo and load capacity limited by weight and distribution.



## IMPORTANT INFORMATION

**CHEVROLET OWNER CENTER (MY.CHEVROLET.COM)** Everything you need to know. Anything you need to do. Your Chevrolet Owner Center makes it easy. Create your account today to get the most out of your new vehicle. Get special alerts and offers, schedule service, review your maintenance schedule, and view how-to videos specifically for your vehicle. All online, anytime. Visit the Owner Center today to register or take a tour.

**CHEVROLET COMPLETE CARE** Every new 2015 Chevrolet Traverse comes with 2 years/24,000 miles of scheduled maintenance that includes oil and filter changes, tire rotations and multipoint vehicle inspections. Covers only scheduled oil changes with filter and tire rotations according to your new vehicle's recommended maintenance schedule for up to 2 years or 24,000 miles, whichever comes first. Does not include air filters. Maximum of four service events. See participating dealer for other restrictions and complete details.

**ENGINES** Chevrolet products are equipped with engines produced by GM Powertrain or other suppliers to GM worldwide. The engines in Chevrolet products may also be used in other GM makes and models.

**ASSEMBLY** Chevrolet vehicles and their components are assembled or produced by different operating units of General Motors, its subsidiaries or suppliers to GM worldwide. We sometimes find it necessary to produce Chevrolet vehicles with different or differently sourced components than originally scheduled. Since some options may be unavailable when your vehicle is assembled, we suggest you verify that your vehicle includes the equipment you ordered and that, if there were changes, they are acceptable to you.

**ONSTAR** OnStar services require vehicle electrical system (including battery), wireless service and GPS satellite signals to be available and operating for features to function properly. OnStar acts as a link to existing emergency service providers. Subscription Service Agreement required. Call 1-888-4ONSTAR (1-888-466-7827) or visit [onstar.com](http://onstar.com) for OnStar Terms and Conditions, Privacy Policy, details and system limitations.

**A NOTE ON CHILD SAFETY** Always use safety belts and the correct restraint for your child's age and size. Even in vehicles equipped with the Passenger Sensing System, children are safer when properly secured in a rear seat in the appropriate infant, child or booster seat. Never place a rear-facing infant restraint in the front seat of any vehicle equipped with a passenger air bag. See the Owner's Manual and child safety seat instructions for more safety information.

**IMPORTANT WORDS ABOUT THIS CATALOG** We have tried to make this catalog comprehensive and factual. We reserve the right, however, to make changes at any time, without notice, in prices, colors, materials, equipment, specifications, models and availability. Specifications, dimensions, measurements, ratings and other numbers in this catalog and other printed materials provided at the dealership or affixed to vehicles are approximations based on design and engineering drawings, prototypes and laboratory tests. Your vehicle may differ due to variations in manufacture and equipment. Since some information may have been updated since the time of printing, please check with your Chevrolet dealer for complete details. Chevrolet reserves the right to lengthen or shorten the model year for any product for any reason or to start and end model years at different times. Certain vehicle features may lose their usefulness over time due to obsolescence from technological changes. Unless otherwise noted, all claims based on GM Mid SUV-Crossover segment and latest available competitive information. Excludes other GM vehicles.

**FLEET ORDERS** Some standard content may be deleted on fleet orders. See dealer for details.

**CHEVROLET OWNERSHIP EXPERIENCE** Chevrolet is committed to enhancing the vehicle shopping and ownership experience through a wide array of programs. Visit [chevrolet.com](http://chevrolet.com) to build and price, find a vehicle, request a quote, compare vehicles, find financial tools or track your vehicle order. You'll also find information about 24-hour Roadside Assistance, Courtesy Transportation, Customer Assistance, GM Mobility, safety and current incentives.

**CHEVROLET.COM/SAFETY** Chevrolet is committed to keeping you and your family safe – from the start of your journey to your destination. That's why every Chevrolet is designed with a comprehensive list of safety and security features to help give you peace of mind.

**GMMOBILITY.COM (1-800-323-9935)** GM Mobility™ offers financial assistance for eligible adaptive equipment to make automotive travel easier for persons with disabilities or special transportation needs. To learn more about special GM Mobility offers, visit [gmmobility.com](http://gmmobility.com).

**THE BUYPOWER CARD** The Chevrolet BuyPower Card – Every purchase you make with the BuyPower Card from Capital One\* helps you earn toward an eligible new Chevrolet, Buick, GMC or Cadillac vehicle. There's no limit on the amount you can earn or redeem, and your Earnings don't expire. Visit [chevroletbuypowercard.com/catalogs](http://chevroletbuypowercard.com/catalogs).

\* Capital One, N.A. is the issuer of the BuyPower Card. General Motors ("GM") is responsible for the operation and administration of the Earnings program.



TWITTER.COM/CHEVROLET



YOUTUBE.COM/CHEVROLET



FACEBOOK.COM/CHEVROLET

GM, the GM logo, Chevrolet, the Chevrolet logo, and the slogans, emblems, vehicle model names, vehicle body designs and other marks appearing in this catalog are the trademarks and/or service marks of General Motors, its subsidiaries, affiliates or licensors. ©2014 OnStar. All rights reserved. SiriusXM and all related marks and logos are trademarks of Sirius XM Radio Inc. Bose is a registered trademark of the Bose Corp. The Bluetooth word mark is a registered trademark owned by Bluetooth SIG, Inc., and any use of such mark by Chevrolet is under license.

©2014 General Motors. All rights reserved. July 2014



**FIND NEW ROADS™**

**CHEVROLET.COM**



Information Provided by:

**DEALER**  
E-PROCESS